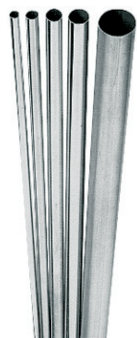


SISTEMA DE PRENSAR EN ACERO INOXIDABLE PARA GAS



Tubería con soldadura

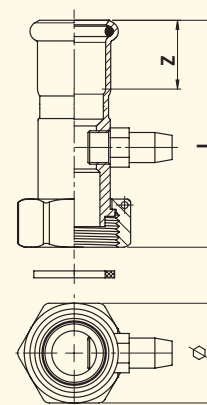


Código		D mm	Espesor	L. tubo (m)	Peso (Kg/m)	Paquete de tubo (m)	Norma EN 10312
304	316L						
102015X10	104015X10	15	1,0	6	0,351	678	Mat.-Nr. 1.4404 (AISI-316L) 1.4301 (AISI-304) Serie 2 (DVGW) UNE-60670-3:2014
102018X10	104018X10	18	1,0	6	0,425	678	
102022X12	104022X12	22	1,2	6	0,625	678	
102028X12	104028X12	28	1,2	6	0,805	678	
102035X15	104035X15	35	1,5	6	1,258	546	
102042X15	104042X15	42	1,5	6	1,521	366	
102054X15	104054X15	54	1,5	6	1,972	366	
102076X20	104076X20	76	2,0	6	3,711	144	
102088X20	104088X20	88	2,0	6	4,352	114	
102108X20	104108X20	108	2,0	6	5,310	114	

Racor 2P precintable con purgador



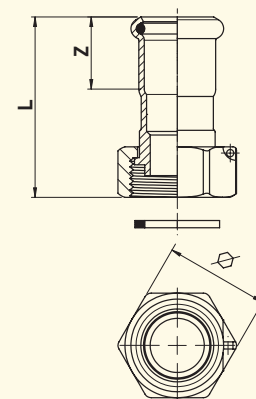
Código	D mm	L mm	Z mm	∅ mm	Uds.
23R2PP015020P	15-3/4"	65	20	29	10
23R2PP015078P	15-7/8"	70	20	34	10
23R2PP018020P	18-3/4"	65	20	29	10
23R2PP018078P	18-7/8"	70	20	34	10
23R2PP022020P	22-3/4"	65	21	29	10
23R2PP022078P	22-7/8"	70	21	34	10



Racor 2P precintable

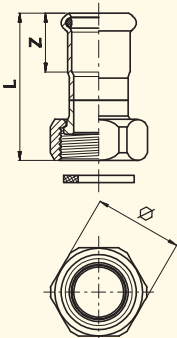


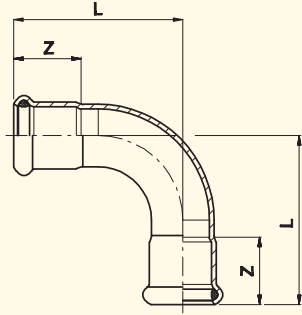
Código	D mm	L mm	Z mm	∅ mm	Uds.
23R2PP015M20	15-20x150	50	20	24	10
23R2PP015015	15-1/2"	50	20	24	10
23R2PP018015	18-1/2"	50	20	24	10
23R2PP018020	18-3/4"	50	20	29	10
23R2PP018078	18-7/8"	50	20	34	10
23R2PP022020	22-3/4"	53	21	29	10
23R2PP022078	22-7/8"	56	21	34	10
23R2PP028078	28-7/8"	59	23	34	10
23R2PP028025	28-1"	59	23	36	10
23R2PP035032	35-1.1/4"	63	26	45	4
23R2PP042040	42-1.1/2"	70	30	52	2
23R2PP054050	54-2"	80	35	64	2

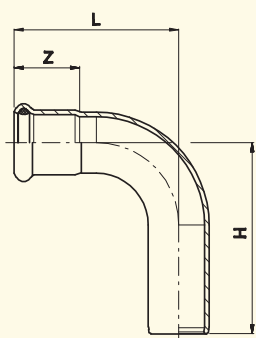


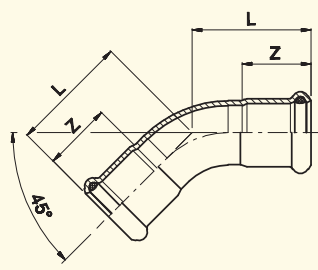
ACCESORIOS DE PRESIÓN GAS ACERO INOXIDABLE

AISI-316L / 1.4404

	Código	D mm	L mm	Z mm	Ø mm	Uds.	Racor 2P con asiento plano
	23R2P015015	15-1/2"	52	20	27	4	
23R2P015020	15-3/4"	50	20	30	4		
23R2P018015	18-1/2"	54	20	27	4		
23R2P018020	18-3/4"	50	20	30	4		
23R2P022020	22-3/4"	48	21	30	4		
23R2P022025	22-1"	52	21	36	4		
23R2P028025	28-1"	51,5	23	36	4		
23R2P035032	35-1.1/4"	57,5	26	46	1		
23R2P042040	42-1.1/2"	63,5	30	52	1		
23R2P042050	42-2"	68	30	64	1		
23R2P054050	54-2"	72	35	64	1		
23R2P054065	54-2.1/2"	77	35	81	1		

	Código	D mm	Radio	L mm	Z mm	Uds.	Curva 90° HH
	23C90HH015	15	1,2-D	38	20	4	
23C90HH018	18	1,2-D	41,5	20	4		
23C90HH022	22	1,2-D	47	21	4		
23C90HH028	28	1,2-D	56	23	4		
23C90HH035	35	1,2-D	68	26	1		
23C90HH042	42	1,2-D	80	30	1		
23C90HH054	54	1,2-D	100	35	1		
23C90HH076	76	1,2-D	160	55	1		
23C90HH088	88	1,2-D	182	60	1		
23C90HH108	108	1,2-D	220	75	1		

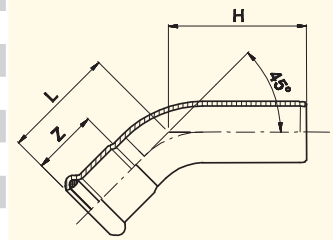
	Código	D mm	Radio	L mm	Z mm	H mm	Uds.	Curva 90° HM
	23C90HM015	15	1,2-D	38	20	48	4	
23C90HM018	18	1,2-D	41,5	20	48,5	4		
23C90HM022	22	1,2-D	47	21	57	4		
23C90HM028	28	1,2-D	56	23	64	4		
23C90HM035	35	1,2-D	68	26	82	1		
23C90HM042	42	1,2-D	80	30	101	1		
23C90HM054	54	1,2-D	100	35	120	1		
23C90HM076	76	1,2-D	160	55	180	1		
23C90HM088	88	1,2-D	182	60	197	1		
23C90HM108	108	1,2-D	220	75	236	1		

	Código	D mm	Radio	L mm	Z mm	Uds.	Curva 45° HH
	23C45HH015	15	1,2-D	27,5	20	4	
23C45HH018	18	1,2-D	29,5	20	4		
23C45HH022	22	1,2-D	32	21	4		
23C45HH028	28	1,2-D	37	23	4		
23C45HH035	35	1,2-D	43	26	1		
23C45HH042	42	1,2-D	50	30	1		
23C45HH054	54	1,2-D	62	35	1		
23C45HH076	76	1,2-D	133	55	1		
23C45HH088	88	1,2-D	144	60	1		
23C45HH108	108	1,2-D	169	75	1		

Curva 45° HM



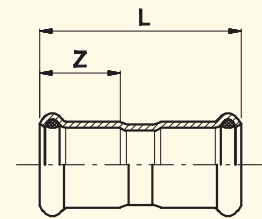
Código	D mm	Radio	L mm	Z mm	H mm	Uds.
23C45HM015	15	1,2-D	27,5	20	36	4
23C45HM018	18	1,2-D	29,5	20	38	4
23C45HM022	22	1,2-D	32	21	42	4
23C45HM028	28	1,2-D	37	23	46	4
23C45HM035	35	1,2-D	43	26	57	1
23C45HM042	42	1,2-D	50	30	71	1
23C45HM054	54	1,2-D	62	35	82	1
23C45HM076	76	1,2-D	133	55	143	1
23C45HM088	88	1,2-D	144	60	160	1
23C45HM108	108	1,2-D	169	75	186	1



Manguito HH



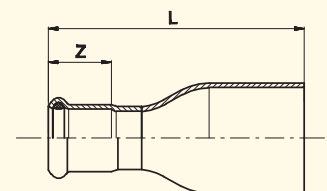
Código	D mm	L mm	Z mm	Uds.
23M015	15	49	20	4
23M018	18	50	20	4
23M022	22	53	21	4
23M028	28	56	23	4
23M035	35	63	26	1
23M042	42	72	30	1
23M054	54	83	35	1
23M076	76	142	55	1
23M088	88	166	60	1
23M108	108	203	75	1



Reducción MH




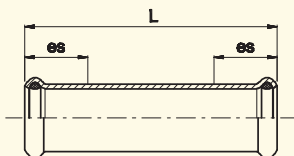
Código	D mm	L mm	Z mm	Uds.
23RE018015	18-15	57	20	4
23RE022015	22-15	64	20	4
23RE022018	22-18	60	20	4
23RE028015	28-15	77	20	4
23RE028018	28-18	75	20	4
23RE028022	28-22	65	21	4
23RE035015	35-15	84	20	1
23RE035018	35-18	81	20	1
23RE035022	35-22	70	21	1
23RE035028	35-28	71	23	1
23RE042015	42-15	87	20	1
23RE042018	42-18	87	20	1
23RE042022	42-22	97	21	1
23RE042028	42-28	93	23	1
23RE042035	42-35	81	26	1
23RE054015	54-15	98	20	1
23RE054018	54-18	98	20	1
23RE054022	54-22	99	21	1
23RE054028	54-28	109	23	1
23RE054035	54-35	108	26	1
23RE054042	54-42	98	30	1
23RE076042	76-42	143	30	1
23RE076054	76-54	147	35	1
23RE088054	88-54	160	35	1
23RE088076	88-76	184	55	1
23RE108076	108-76	203	55	1
23RE108088	108-88	207	60	1




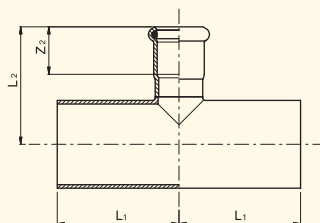
ACCESORIOS DE PRESIÓN GAS ACERO INOXIDABLE


AISI-316L / 1.4404

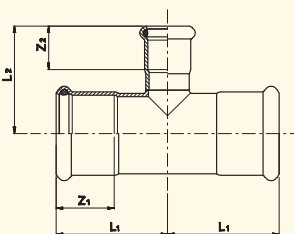
Código	D mm	L mm	es mm	Uds.	Manguito sin tope	
23MST015	15	80	25	4		
23MST018	18	80	25	4		
23MST022	22	84	25	4		
23MST028	28	91	30	4		
23MST035	35	102	30	1		
23MST042	42	120	40	1		
23MST054	54	140	40	1		
23MST076	76	230	60	1		
23MST088	88	260	70	1		
23MST108	108	310	80	1		



Código	D mm	L1 mm	L2 mm	Z2 mm	Uds.	Te reducida MHM
23TRM028022	28-22-28	52,5	47	21	4	
23TRM035022	35-22-35	60	50,5	21	1	
23TRM035028	35-28-35	60	50,5	23	1	
23TRM042028	42-28-42	69	57	23	1	
23TRM054028	54-28-54	73,5	64,5	23	1	



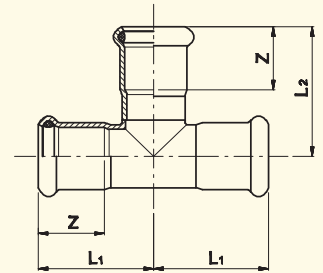
Código	D mm	L1 mm	L2 mm	Z1 mm	Z2 mm	Uds.	Te reducida HHH
23TR018015	18-15-18	37	41	20	20	4	
23TR022015	22-15-22	39	43	21	20	4	
23TR022018	22-18-22	39	44	21	20	4	
23TR028015	28-15-28	44	46	23	20	4	
23TR028018	28-18-28	44	46	23	20	4	
23TR028022	28-22-28	44	47	23	21	4	
23TR035015	35-15-35	51	49	26	20	1	
23TR035018	35-18-35	51	50	26	20	1	
23TR035022	35-22-35	51	51	26	21	1	
23TR035028	35-28-35	51	54	26	23	1	
23TR042022	42-22-42	59	54	30	21	1	
23TR042028	42-28-42	59	57	30	23	1	
23TR042035	42-35-42	59	61	30	26	1	
23TR054022	54-22-54	70	62	35	21	1	
23TR054028	54-28-54	70	65	35	23	1	
23TR054035	54-35-54	70	68	35	26	1	
23TR054042	54-42-54	70	72	35	30	1	
23TR076054	76-54-76	108	90	55	35	1	
23TR088054	88-54-88	132	97	60	35	1	
23TR088076	88-76-88	132	125	60	55	1	
23TR108076	108-76-108	155	135	75	55	1	
23TR108088	108-88-108	155	141	75	60	1	



Te igual HHH



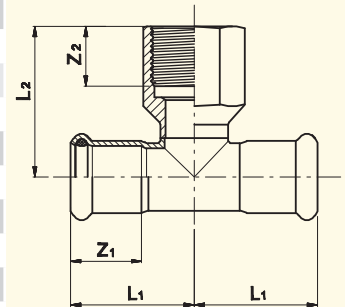
Código	D mm	L1 mm	L2 mm	Z mm	Uds.
23T015	15	34	39	20	4
23T018	18	37	41	20	4
23T022	22	39	45	21	4
23T028	28	44	50	23	4
23T035	35	51	57	26	1
23T042	42	59	65	30	1
23T054	54	70	77	35	1
23T076	76	108	118	55	1
23T088	88	132	131	60	1
23T108	108	155	159	75	1



Te hembra roscada



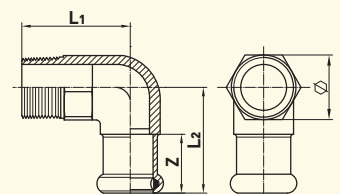
Código	D mm	L1 mm	L2 mm	Z1 mm	Z2 mm	Uds.
23TH015015	15-1/2"-15	34	40	20	15	4
23TH018015	18-1/2"-18	37	42	20	15	4
23TH018020	18-3/4"-18	37	45	20	17	4
23TH022015	22-1/2"-22	39	44	21	15	4
23TH022020	22-3/4"-22	39	47	21	17	4
23TH028015	28-1/2"-28	44	47	23	15	4
23TH028020	28-3/4"-28	44	50	23	17	4
23TH035015	35-1/2"-35	51	51	26	15	1
23TH035020	35-3/4"-35	51	54	26	17	1
23TH042015	42-1/2"-42	59	54	30	15	1
23TH042020	42-3/4"-42	59	57	30	17	1
23TH054015	54-1/2"-54	70	61	35	15	1
23TH054020	54-3/4"-54	70	64	35	17	1
23TH054050	54-2"-54	70	81	35	26	1
23TH076020	76-3/4"-76	108	77	55	17	1
23TH076050	76-2"-76	108	93	55	26	1
23TH088020	88-3/4"-88	132	84	60	17	1
23TH088050	88-2"-88	132	100	60	26	1
23TH108020	108-3/4"-108	155	94	75	17	1
23TH108050	108-2"-108	155	110	75	26	1



Codo 90° macho



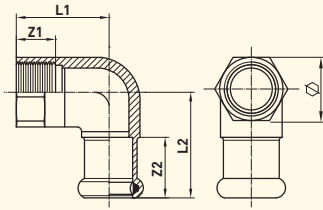
Código	D mm	L1 mm	L2 mm	Z mm	Ø mm	Uds.
23CM015015	15-1/2"	37	36	20	22	4
23CM018015	18-1/2"	37	36	20	22	4
23CM022020	22-3/4"	44	43	21	28	4
23CM028025	28-1"	56	50	23	36	4
23CM035032	35-1 1/4"	63	76,5	26	46	1
23CM042040	42-1 1/2"	67,5	80	30	50	1
23CM054050	54-2"	78,5	91,5	35,5	65	1



ACCESORIOS DE PRESIÓN GAS ACERO INOXIDABLE

AISI-316L / 1.4404

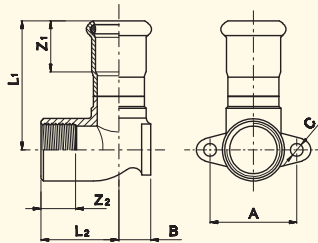
Codo 90° hembra



Código	D mm	L1 mm	L2 mm	Z1 mm	Z2 mm	Ø mm	Uds.
23CH015015	15-1/2"	33	36	15	20	24	4
23CH018015	18-1/2"	33	36	15	20	24	4
23CH022020	22-3/4"	38	43	19	21	30	4
23CH028015	28-1/2"	33	39	15	23	24	4
23CH028025	28-1"	48	50	21	23	38	4
23CH035032	35-1 1/4"	48	70,5	21	20	46	1
23CH042040	42-1 1/2"	51	80	21	30	50	1
23CH054050	54-2"	66	92	26	36	65	1



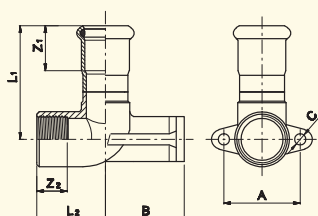
Codo 90° placa HH



Código	D mm	L1 mm	L2 mm	Z1 mm	Z2 mm	A mm	B mm	C mm	Uds.
23CP015015	15 x 1/2"	50	30	20	15	34	13	5	4
23CP018015	18 x 1/2"	51	30	20	15	34	13	5	4
23CP022020	22 x 3/4"	55	34	21	17	40	17	6	4



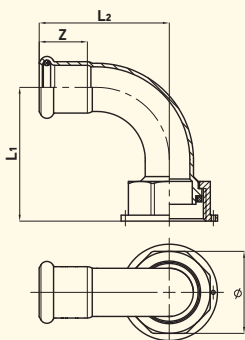
Codo 90° distanciador HH



Código	D mm	L1 mm	L2 mm	Z1 mm	Z2 mm	A mm	B mm	C mm	Uds.
23CPD022025	22 x 1"	59	35	21	18	50	30	6,5	4
23CPD028025	28 x 1"	62	35	23	18	50	30	6,5	4



Racor 90° 2P precintable



Código	D mm	L1 mm	L2 mm	Z mm	Ø mm	Uds.
23CR2PP018078	18 - 7/8"	55,5	54	20	34	4
23CR2PP022078	22 - 7/8"	55,5	60	21	34	4

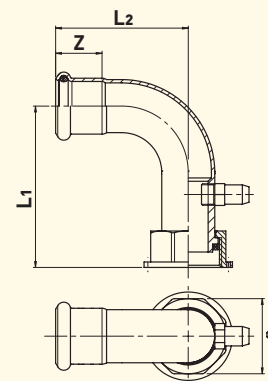


Racor 90° 2P precintable con purgador



NBR

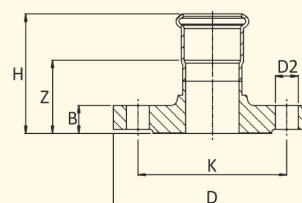
Código	D mm	L1 mm	L2 mm	Z mm	Ø mm	Uds.
23CR2PP018078P	18 - 7/8"	75	54	20	34	4
23CR2PP022078P	22 - 7/8"	73	60	21	34	4



Brida adaptador PN 16



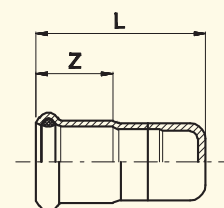
Código	D mm	DN mm	Z mm	H mm	B mm	D mm	A mm	Nº Tal. mm	K mm	Uds.
23BA022	22	20	37,5	58,5	12	105	14	4	75	1
23BA028	28	25	38,5	61,5	14	115	14	4	85	1
23BA035	35	32	39,5	65,5	15	140	18	4	100	1
23BA042	42	40	39	69	16	150	18	4	110	1
23BA054	54	50	42	78	18	165	18	4	125	1
23BA076	76	65	50	105	18	185	18	8	145	1
23BA088	88	80	56	116	20	200	18	8	160	1
23BA108	108	100	57	132	20	220	18	8	180	1



Tapón



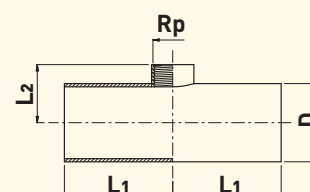
Código	D mm	L mm	Z mm	Uds.
23TA015	15	44	20	4
23TA018	18	44	20	4
23TA022	22	45	21	4
23TA028	28	48	23	4
23TA035	35	52	26	1
23TA042	42	56	30	1
23TA054	54	62	35	1
23TA076	76	93	55	1
23TA088	88	99	60	1
23TA108	108	117	75	1



Tubo rosca hembra para toma

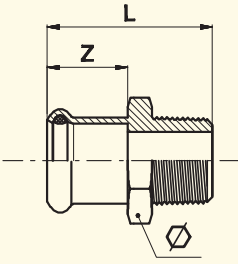


Código	D mm	L1 mm	L2 mm	Rp	Uds.
23TRH076008	76	95	49	1/4"	1
23TRH088008	88	100	54,5	1/4"	1
23TRH108008	108	115	64	1/4"	1

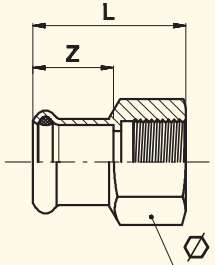


ACCESORIOS DE PRESIÓN GAS ACERO INOXIDABLE

AISI-316L / 1.4404

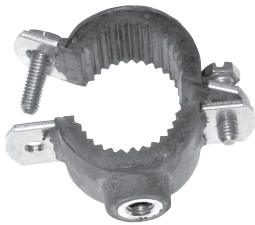
	Unión macho					
	Código	D mm	L mm	Z mm	Ø mm	Uds.
	23UM015010	15-3/8"	38	20	24	4
	23UM015015	15-1/2"	41	20	24	4
	23UM015020	15-3/4"	43	20	30	4
	23UM018015	18-1/2"	41	20	27	4
	23UM018020	18-3/4"	44	20	30	4
	23UM022015	22-1/2"	42	21	32	4
	23UM022020	22-3/4"	44	21	32	4
	23UM022025	22-1"	46	21	36	4
	23UM028020	28-3/4"	47	23	38	4
	23UM028025	28-1"	48	23	38	4
	23UM028032	28-1.1/4"	53	23	46	4
	23UM035025	35-1"	52	26	45	1
	23UM035032	35-1.1/4"	55	26	45	1
	23UM035040	35-1.1/2"	55	26	50	1
	23UM042032	42-1.1/4"	59	30	54	1
	23UM042040	42-1.1/2"	59	30	54	1
	23UM054040	54-1.1/2"	65	35	65	1
	23UM054050	54-2"	71	35	65	1
	23UM076065	76-2.1/2"	124	55	80	1
	23UM088080	88-3"	138	60	95	1
23UM108100	108-4"	163	75	115	1	



	Unión hembra						
	Código	D mm	L mm	Z mm	Ø mm	Uds.	
	23UH015015	15-1/2"	38	20	27	4	
	23UH015020	15-3/4"	39	20	32	4	
	23UH018015	18-1/2"	38	20	27	4	
	23UH018020	18-3/4"	39	20	32	4	
	23UH022015	22-1/2"	39	21	32	4	
	23UH022020	22-3/4"	40	21	32	4	
	23UH022025	22-1"	43	21	41	4	
	23UH028020	28-3/4"	42	23	38	4	
	23UH028025	28-1"	45	23	41	4	
	23UH028032	28-1.1/4"	48	23	46	4	
	23UH035025	35-1"	49	26	46	1	
	23UH035032	35-1.1/4"	52	26	46	1	
	23UH035040	35-1.1/2"	52	26	55	1	
	23UH042032	42-1.1/4"	56	30	54	1	
	23UH042040	42-1.1/2"	56	30	54	1	
	23UH054040	54-1.1/2"	60	35	65	1	
	23UH054050	54-2"	65	35	65	1	

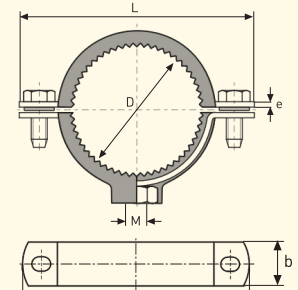


Abrazadera VULCANIZADA



Código	DN	D mm	L mm	e mm	M	b mm	Peso kg/u.	Uds.
412AI008	15	15-18	58	2,5	M8	20	0,072	50
412AI010	18 3/8"	16-18	58	2,5	M8	20	0,076	50
412AI015	22 1/2"	20-24	63,5	2,5	M8	20	0,086	50
412AI020	28 3/4"	25-28	70	2,5	M8	20	0,094	50
412AI025	35 1"	31-35	79	2,5	M8	20	0,112	50
412AI032	42 1.1/4"	39-43	85	2,5	M8	20	0,120	50
412AI040	54 1.1/2"	47-54	97	2,5	M8	20	0,142	50
412AI050	2"	58-61	107	2,5	M8	20	0,156	20
412AI065	76,1 2.1/2"	73-76,5	128	2,5	M10	30	0,308	10
412AI080	88,9 3"	86-89	148	2,5	M10	30	0,346	10
412AI100	4"	110-115	168	2,5	M10	30	0,382	10

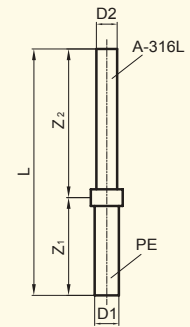
Material: AISI-304/EPDM
Temp. resistencia goma:
-20°C/+120°C



Transición inox-polietileno



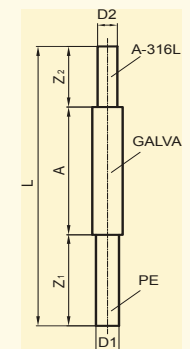
Código	D mm	L mm	Z1 mm	Z2 mm	Uds.
23TRAPE32	22-PE32	500	225	275	1
23TRAPE40	42-PE40	500	225	275	1
23TRAPE63	54-PE63	560	230	330	1
23TRAPE91	88-PE90	570	235	335	1
23TRAPE110	108-PE110	570	235	335	1



Tallo inox-polietileno



Código	D mm	L mm	Z1 mm	Z2 mm	A mm	Uds.
23TRPE32	22-PE32	860	300	160	400	1
23TRPE40	42-PE40	860	300	160	400	1
23TRPE63	54-PE63	870	300	170	400	1
23TRPE91	88-PE90	880	300	180	400	1

Transición soldar-macho
acero carbono

Código	D mm	D1 mm	S mm	S1 mm	L1 mm	L mm	Peso kg/u.	Uds.
23TSM015010	17,2	15	2,60	1,50	30	120	0,089	10
23TSM018015	21,3	18	3,15	1,50	30	120	0,132	10
23TSM022020	26,9	22	3,95	1,50	34	120	0,216	10
23TSM028025	33,7	28	4,35	1,50	34	120	0,303	5
23TSM035032	42,4	35	5,20	1,50	40	120	0,423	5
23TSM042040	48,3	42	4,65	1,50	45	120	0,438	5
23TSM054050	60,3	54	4,65	1,50	50	120	0,537	2
23TSM076065	76,1	76	3,70	2,00	70	120	0,570	2
23TSM088080	88,9	88	4,10	2,00	75	120	0,692	2
23TSM108100	114,3	108	5,20	2,00	90	120	0,842	2

